

## Coolqiya Wireless Doorbell User Manual

Please carefully read this user manual before using and installation  
12 months warranty & friendly customer service, any issue please contact us.  
Cherryli2015@hotmail.com

### Features

- Super long operation range;
- 52 selectable ringtones;
- 4-level adjustable volume;
- Easy to install and use;
- Low power consumption;
- Easy to add additional transmitters or receivers;
- Modern and stylish design with blue LED flash light.

### Specifications

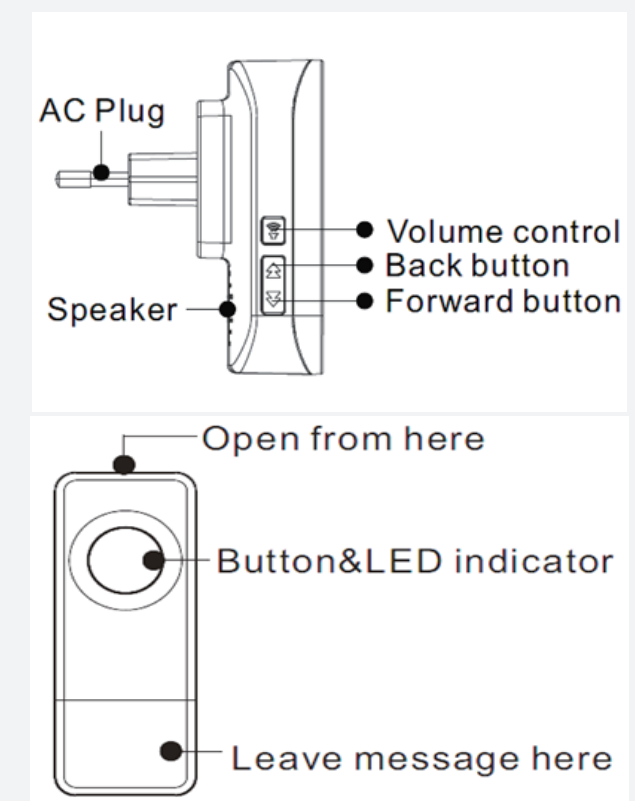
Working Voltage of Plug-in Receiver:	AC 85~265V
Power Consumption of Receiver	<0.5W
Power Consumption of Transmitter	<10mW
Battery in Transmitter	12V 23A alkaline battery
Wireless Working Range:	500~1000 feet( in the open air)
Weatherproof	Waterproof; Anti-dust
Audible Range	300 feet
Selectable Ringtones:	52 Pieces
Volume Range:	25~110 dB, 4 levels
Expandable (Yes or No):	Yes
Working Frequency:	433.92 MHz±280KHz
Working Temperature:	-20°C~70°C/ - 4°F~158°F
Application	for big house/office/alert device

(1)

### What You Should Know Before Installation

1. The transmitters with this kit are paired with receivers and set to default tune "Dingdong", IF NOT, please refer to the "Quick Start" to pair the transmitters with receivers to set your favorite tunes.
2. It is not advisable to mount the transmitter onto metal surfaces as it can affect RF signals between transmitters and receivers to reduce the working distance. If it's your only choice, we recommend sticky pad provided to install, and not the screws.
3. To avoid accelerate aging of plastic material, please do not mount the transmitter directly without any shelter.

(2)



(3)

### Quick Start

1. **Sound volume control:** 4-level adjustable volume, press the volume control button on the receiver to adjust between high and low volume.
2. **Adjustable Ringtone:** There are 52 ring tones to choose from, including bird song, dog barking, alarm, multiple type "ding-dong", Christmas, piano melodies, classical musical ring tones.
  - a. The ringtone can be set different for transmitters, and doorbell can maintain their settings when power is removed, no need to reset.
  - b. Press Forward Button or Back Button to choose your favorite ringtone, the receiver playing is the ringtone selected.
3. **You can expand 10+ transmitters/ receivers.**

(4)

### 4. How to add additional transmitters/ receivers or set doorbells to have different rings?

It's the same way to set them, you just need to pair transmitter buttons to receivers one by one for a new code, please do it by following steps:

- (1). Please plug one receiver into a regular socket, and pick the sound you want on this receiver.
- (2). Press and hold the volume button on the receiver about 5 seconds till it blink with a "ding" sound, then push a transmitter to pair with the receiver  
Finally you will hear the music you set.
- (3). It is the same operation method to pair other transmitters with receivers for new code.

(5)

### 5. How to split doorbells up between multi-unit transmitters and receivers?

Firstly, clear the original old code of receivers, press and hold the forward button of receivers about 5 seconds till it blink with ding sound, then pair transmitters to receivers for a new code one by one again (following above steps (1) - (3).)

For the transmitter which don't control this receiver, please don't pair, just do nothing, only pair the transmitters that need to control it.

### 6. Each receiver can be paired with only one transmitter every time.

(6)

### Troubleshooting

#### 1. The receiver cannot work.

- May need to replace the battery of doorbell button.
- The plug of receiver may be loose.
- The receiver may not be paired with the doorbell button, or operating distance is out of range.

#### 2. Below situation may reduce doorbell's operating range.

- Low battery power (replace it every 12~18 months.);
- Walls, ceilings or some equipment can cause some radio interference;
- Metal structures, including uPVC door frames, can shorten operating range.

(7)

### Installation Methods

Note: Before installation, please test the doorbell range first.

**For Receiver:** Just plug receiver into standard outlet, and it will work.

**For Transmitter:** 2 methods to install transmitters.

#### Method 1: by double-sided adhesive strip (preferred installation method)

Clean the flat area where need to install transmitter. Tear off adhesive strip and stick transmitter onto wall.

#### Method 2: by screw & anchors (optional install method)

Prepare an electric drill, Phillips screwdriver and slotted screwdriver before installation.

1. Make two marks on the place of two mounting holes.
2. Drill two holes on the marked places, and then insert 2 expansion bolts provided.
3. Screw up the back cover and put back the front case.

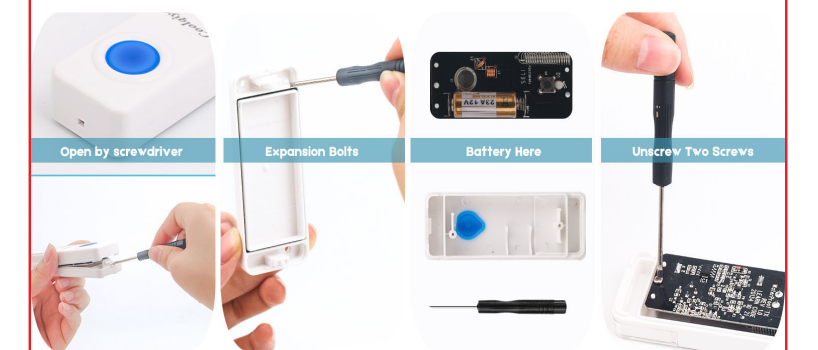
(8)

### How to Install Transmitter and Replace Battery.

#### Solution 1 - Double-sided Tape



#### Solution 2 - Screws & Anchors



(9)